

Concurrent  
Sessions  
2 Million

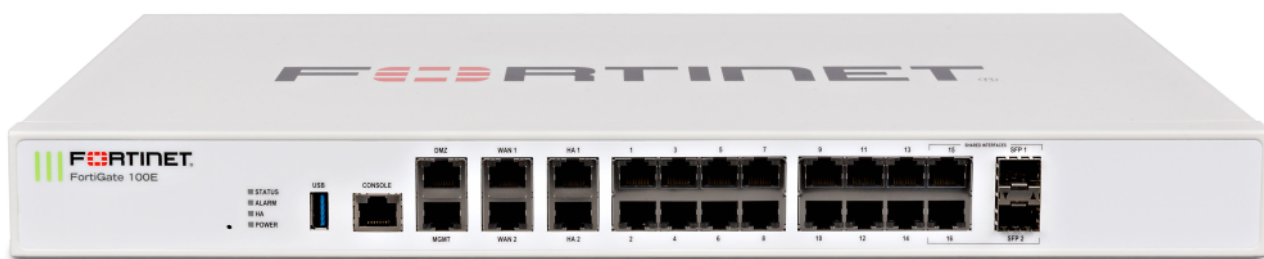
# FortiGate® 100E Series

FortiGate 100E, 101E, 100EF, and 140E-POE

Secure SD-WAN

Next Generation Firewall

Secure Web Gateway



Dòng sản phẩm FortiGate 100E cung cấp giải pháp SD-WAN tập trung vào ứng dụng, có thể mở rộng và bảo mật dữ liệu, cùng với Hệ thống Firewall Tiếp theo (NGFW), phù hợp cho các văn phòng, chi nhánh doanh nghiệp quy mô vừa và lớn.

FortiGate 100E bảo vệ hệ thống mạng của bạn khỏi các mối đe dọa mạng bằng khả năng tăng tốc hệ thống trên chip cùng với công nghệ bảo mật hàng đầu SD-WAN. Đây là một giải pháp đơn giản, giá cả phải chăng và dễ triển khai.

Fortinet's Security-Driven Networking cung cấp khả năng tích hợp mạng của bạn với nền tảng bảo mật thế hệ mới

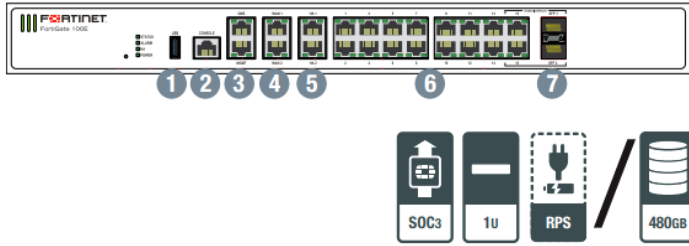
## Tính năng nổi bật

- Số cổng: 20 x GE RJ45, 2x Shared Port Pairs
- Local storage: 480 GB (101E)
- Firewall Throughput (1518/512/64 byte UDP): 7.4 / 7.4 / 7.4 Gbps
- IPsec VPN Throughput (512 byte): 4 Gbps
- IPSThroughput (Enterprise Mix): 500 Mbps
- NGFW Throughput (Enterprise Mix: 360 Mbps
- Threat Protection Throughput (Ent. Mix): 250 Mbps
- Firewall Latency: 3  $\mu$ s
- Concurrent Sessions: 2 Million
- New Sessions/Sec: 30,000
- Firewall Policy: 10,000
- Max G/W to G/W IPSEC Tunnels: 2,000
- Max Client to G/W IPSEC Tunnels: 10,000
- SSL VPN Throughput: 250 Mbps
- Concurrent SSL VPN Users (Recommended Maximum, Tunnel Mode): 500
- SSL Inspection Throughput (IPS, avg. HTTPS): 130 Mbps

FORTINET

INTERCOM  
Connect to Values

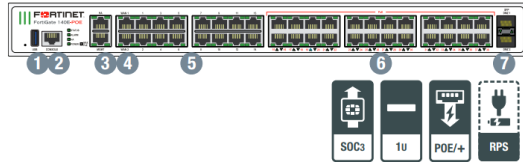
## FortiGate 100E/101E



## Interfaces

1. USB Port
2. Console Port
3. 2x GE RJ45 MGMT/DMZ Ports
4. 2x GE RJ45 WAN Ports
5. 2x GE RJ45 HA Ports
6. 14x GE RJ45 Ports
7. 2x GE RJ45/SFP Shared Media Pairs

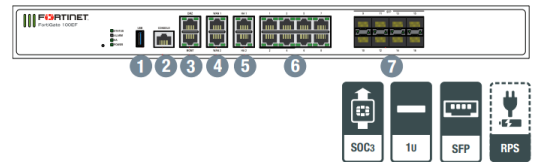
## FortiGate 140E-POE



## Interfaces

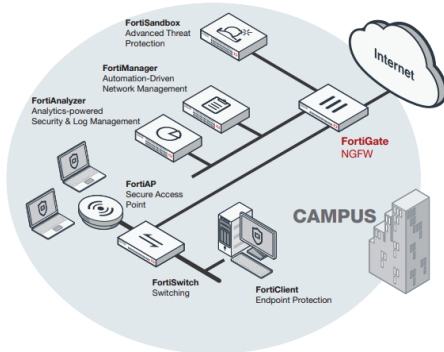
1. USB Port
2. Console Port
3. 2x GE RJ45 MGMT/HA Ports
4. 2x GE RJ45 WAN Ports
5. 14x GE RJ45 Ports
6. 24x GE RJ45 POE Ports
7. 2x GE SFP DMZ Slots

## FortiGate 100EF



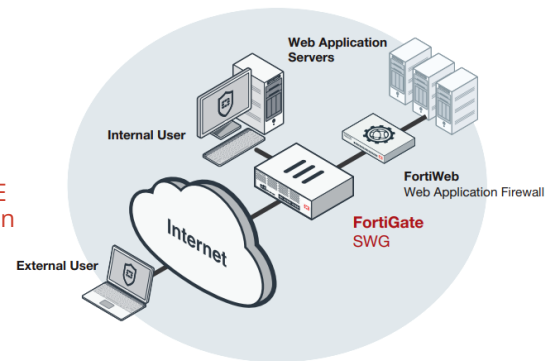
## Interfaces

1. USB Port
2. Console Port
3. 2x GE RJ45 MGMT/DMZ Ports
4. 2x GE RJ45 WAN Ports
5. 2x GE RJ45 HA Ports
6. 8x GE RJ45 Ports
7. 8x GE SFP Slots



FortiGate 80E deployment in Enterprise Branch (Secure SD-WAN)

FortiWiFi 80E deployment in Small Office (NGFW)



## Bundles

	360 Protection	Enterprise Protection	UTM	Thread Protection
FortiCare	ASE <sup>1</sup>	24/7	24/7	24/7
FortiGuard App Control Service	●	●	●	●
FortiGuard IPS Service	●	●	●	●
FortiGuard Advanced Malware Protection (AMP) — Antivirus, Mobile Malware, Botnet, CDR, Virus Outbreak Protection and FortiSandbox Cloud Service	●	●	●	●
FortiGuard Web Filtering Service	●	●	●	
FortiGuard Antispam Service	●	●	●	
FortiGuard Security Rating Service	●	●		
FortiGuard Industrial Service	●	●		
FortiCASB IoT Detection Service <sup>2</sup>	●	●		
FortiConverter Service	●	●		
IPAM Cloud <sup>2</sup>	●			
SD-WAN Cloud Orchestrator Entitlement <sup>2</sup>	●			
SD-WAN Cloud Assisted Monitoring	●			
SD-WAN Overlay Controller VPN Service	●			
FortiAnalyzer Cloud	●			
FortiManager Cloud	●			

1. 24/7 plus Advanced Services Ticket Handling 2. Available when running FortiOS 6.4

# Thông số kỹ thuật

## FORTIGATE 100E FORTIGATE 101E FORTIGATE 100EF FORTIGATE 140E-POE

### Hardware Specifications

	FORTIGATE 100E	FORTIGATE 101E	FORTIGATE 100EF	FORTIGATE 140E-POE
GE RJ45 Ports	14	14	8	14
GE RJ45 Management /HA/DMZ Ports	1 / 2 / 1	1 / 2 / 1	1 / 2 / 1	1 / 1 / -
GE SFP Slots	-	-	8	2
GE RJ45 PoE/+ Ports	-	-	-	24
GE RJ45 WAN Ports	2	2	2	2
GE RJ45 or SFP Shared Ports	2	2	-	-
USB Port	1	1	1	1
Console Port	1	1	1	1
Internal Storage	-	1 x 480 GB SSD	-	-
Included Transceivers	0	0	0	0

### System Performance — Enterprise Traffic Mix

IPS Throughput <sup>1</sup>	500 Mps
NGFW Throughput <sup>4</sup>	360 Mbps
Threat Protection Throughput <sup>5</sup>	250 Mbps

### System Performance

Firewall Throughput (1518/512/64 byte UDP packets)	7.4 / 7.4 / 4.4 Gbps
Firewall Latency (64 byte UDP packets)	3 µs
Firewall Throughput (Packets Per Second)	6.6 Mbps
Concurrent Sessions (TCP)	2 Million
New Sessions/Second (TCP)	30,000
Firewall Policies	10,000
IPsec VPN Throughput (512 byte)	4 Gbps
Gateway-to-Gateway IPsec VPN Tunnels	2000
Client-to-Gateway IPsec VPNTunnels	10000
SSL-VPN Throughput	250 Mbps
Concurrent SSL-VPN Users (Recommended Maximum, Tunnel Mode)	500
SSL Inspection Throughput (IPS, avg. HTTP <sup>2</sup> )	130 Mbps
SSL Inspection CPS (IPS, avg. HTTP <sup>2</sup> )	130
SSL Inspection Concurrent Session (IPS, avg. HTTP <sup>2</sup> )	125,000
Application Control Throughput (HTTP 64K)	1 Gbps
CAPWAP Throughput (HTTP 64K)	1.5 Gbps
Virtual Domains (Default/ Maximum)	10/10
Maximum Number of FortiSwitches Supported	24
Maximum Number of FortiAPs (Total/Tunnel Mode)	64/ 32
Maximum Number of FortiTokens	5000
High Availability Configurations	Active/Active, Active/Passive, Clustering

### Dimensions

Height x Width x Length (inches)	1.75 x 17 x 10	1.75 x 17 x 10	1.75 x 17 x 10	1.75 x 17 x 15.5
Height x Width x Length (mm)	44.45 x 432 x 254	44.45 x 432 x 254	44.45 x 432 x 254	44.45 x 432 x 394
Form Factor (supports EIA/non-EIA standards)	Rack Mount, 1 RU	Rack Mount, 1 RU	Rack Mount, 1 RU	Rack Mount, 1 RU
Weight	7.28 lbs (3.3kg)	7.28 lbs (3.3kg)	7.28 lbs (3.3kg)	12.4 lbs (5.6 kg)

### Environment

Power Input	100 - 240 V AC 50-60 Hz			
Maximum Current	100V / 0.52A 240V / 0.22A	100V / 0.59A 240V / 0.25A	100V / 0.52A 240V / 0.22A	100V / 5A
Total Available PoE Power Budget*	-	-	-	400W
Power Consumption (Average / Maximum)	23W / 28.6W; 51.9 VA	24.8W / 33.8 W; 59.2 VA	24.4W / 28.6W; 51.9 VA	477.1W / 500.0W
Heat Dissipation	97.6 BTU/h	115.3 BTU/h	97.6 BTU/h	1706.07 BTU/h
Operating Temperature	32-104°F (0-40°C)			
Storage Temperature	-31-158°F (-35-70°C)			
operating Altitude	Up to 7,400 ft (2,250 m)			
Humidity	10-90% non-condensing			
Noise Level	40.4 dBA	40.4 dBA	40.4 dBA	57 dBA
Compliance	FCC, ICES, CE, RCM, VCCI, BSMI, UL/cUL, CB			
Certifications	ICSA Labs: Firewall, IPsec, IPS, Antivirus, SSL-VPN; IPv6			

\*Maximum loading on each PoE/+port is 30W (802.3at)

Note: All performance values are "up to" and vary depending on system configuration.

1. IPsec VPN performance test uses AES256-SHA256.

2. PS (Enterprise Mix), Application Control, NGFW, and Threat Protection are measured with Logging enabled.

3. SSL Inspection performance values use an average of HTTPS sessions of different cipher suites.

4. NGFW performance is measured with Firewall, IPS, and Application Control enabled.

5. Threat Protection performance is measured with Firewall, IPS, Application Control, and Malware Protection enabled.